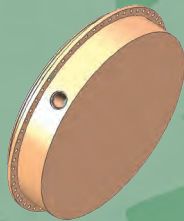
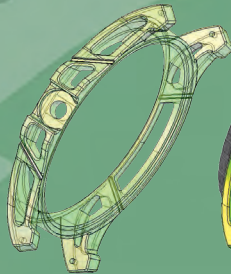




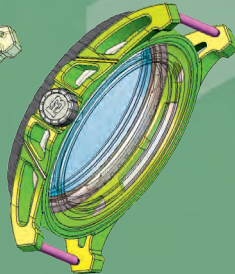
Steel bezel
bidirectional rotating



Solid Stainless
Steel Container



Glass-fibre
reinforced resin
outer case



New traser H3
P 6600 Type 6 MIL-G watch



traser[®]

H3 watches

New P 6600 Type 6 MIL-G
exceeding MIL-PRF-46374G
Type III, Class 1

Double case construction
Swiss quartz movement
Mineral crystal K1
660ft/290psi water resistant
45mm, 80g
Nato- or Rubberstrap
trigilight[®] illumination

www.traser.com